



October 12, 2020

# USED EQUIPMENT



Biglerville, PA  
800-345-3546

Bellevue, OH/Peru, IN  
800-848-8460

Sikeston, MO  
573-475-9496



SPRAYERS



\$180,000

**2015 AGCO Rogator 1300B**, 1367 hours, AGCO Power T4 8.4L 370 hp diesel engine, 1300 gal. SS tank, 120 ft booms with SS boom lines, 20 in. nozzle spacing, 7-section shutoff valve, Raven Viper Pro, Phoenix 300 guidance, parallel swathing, foam marker, A/C, AM/FM radio, air ride seat, fenders, 380/90R46 tires (50% remains). Motivated seller. SN: AGCA1300LFNSL1015 (Dansville, NY) **BROKERED**



\$105,000

**2015 GVM 400HC Mako**, 626 hours, Cummins 4.5L 130 hp diesel engine, Allison auto. trans., 400 gal. poly tank, 60/80 ft booms with poly boom lines, 20 in. nozzle spacing, triple body nozzles, 5-section shutoff valve, Raven SCS460, Greentronics, rear floodlight kit with 4 LED lights, A/C, AM/FM radio, air ride seat, front and rear fenders, 320/85R24 liquid filled front tires (70% remains), 380/85R24 rear tires (60% remains). SN: MK-16400HC1003 (Cowelsville, NY) **BROKERED**



\$65,000

**2009 GVM 9275 Prowler**, 4406 hours, Cummins QSB6.7L 275 hp diesel engine, Funk 10-speed powershift trans., 1600 gal. SS tank, 70/90 ft booms with SS boom lines, 15 in. nozzle spacing, 5-section shutoff valve, triple body nozzles, Ag Leader 1200, parallel swathing, A/C, AM/FM radio, air ride seat, 380/90R46 Goodyear tires. SN: RC-099909T1064 (Winchester, VA) **BROKERED**



\$95,000

**2011 GVM 9275 Prowler**, 3994 hours, Cummins QSB6.7L 275 hp diesel engine, Funk 10-speed powershift trans., 1450 gal. SS tank, 70/90 ft booms with SS boom lines, 15 in. nozzle spacing, 5-section shutoff valve, triple body nozzles, Raven Viper Pro, parallel swathing, AutoSteer, A/C, AM/FM radio, air ride seat, 380/90R46 Trelleborg tires (30% remains), includes set of floater tires not pictured. SN: RC-119909T1083 (Winchester, VA) **BROKERED**



\$185,000

**2015 GVM E325 Prowler**, 2755 hours, Cummins 325 hp diesel engine, 6-speed powershift trans., 1800 gal. SS tank, 120 ft booms with SS boom lines, 20 in. nozzle spacing, 10-section shutoff valve, triple body nozzles, Viper Pro, SmarTrax, SlingShot, RGL 600 Light Bar, poly chemical eductor, A/C, AM/FM radio, air ride seat, fenders, 380/90R46 (50% remains). SN: CS-15325XI1032 (OH) **No. U1328**

SPRAYERS



\$10,500

**2005 Hardi Navigator 1100**, 540 PTO pump, 1100 gal., 80 ft booms with plastic boom lines, single nozzle body, 20 in. nozzle spacing, 4-section shutoff valve, foam marker, chemical inductor, manual adjustable axles, 12.2-42 Titan tires (35% remains).

SN: 12391 (OH) **No. U1441**



\$55,000

**2009 International 7300**, 3115 hours, 22,444 miles, Maxxforce 300 hp diesel engine, 4-wheel drive, Allison 3500 6-speed trans., 850 gal. SS tank, 50 ft booms with SS boom lines, 15 in. nozzle spacing, 3-section shutoff valve, 5-way body nozzles, Raven Envisio Pro, A/C, AM/FM radio, CD player, air ride seat, 380/85R34 tires, 90 in. centers (20% remains), includes (4) 385/65R22.5.

VIN: 1HTWBAAN59J159160 (PA)

Spray Rig SN: SR-09850TK1005



\$59,300

**2008 International DT 7400**, 69,400 miles, MaxxForce 300 hp diesel engine, Eaton Fuller 10-speed trans., 1400 gal. SS tank, 55 ft booms with SS boom lines, 60 in. nozzle spacing, 3-section shutoff valve, single body nozzles, Raven, SS chemical eductor, foam marker, A/C, AM/FM radio, air ride seat, fenders, includes front 385/65R Bridgestone (40% remains) and rear 700/50 Alliance tires (40% remains).

SN: 1HTWDAARX8J041245 (Cranbury, NJ) **BROKERED**



\$30,000

**1994 Lorai Easy Rider**, 3069 hours, 20,844 miles, International 300 hp diesel engine, Allison trans., 1800 gal. SS tank, 55/85 ft Benson booms with SS boom lines, 60 in. nozzle spacing, 3-section shutoff valve, Raven 460, SS chemical eductor, A/C, AM/FM radio, air ride seat, (4) floater tires (20% remains).

(Dickerson, MD) **BROKERED**



\$10,000

**2015 Ag-Chem AirMax 180**, 60 ft booms, electric roll tarp, Raven control nodes. Removed from a 2015 1300B Rogator, came off of unit in working condition.

(PA) **No. U1436A**



\$125,000

**2014 AGCO RG1300 RoGator**, 1892 hours, AGCO 8.4L 330 hp turbo diesel engine, 4WS, painted 409 SS New Leader L4000G4, Raven Viper Pro, Phoenix 300 GPS, parallel swathing, air ride seat, A/C, beacon lights, fenders, electric roll tarp, Michelin 380/90R46 tires (front 45%, rear 35% remains).

SN: AGCA1300VENS1017 (MO) **No. U1436**

SPREADERS



**\$110,000**

**2015 AGCO TG7300 TerraGator**, 2100 hours, AGCO 330 hp diesel engine, CVT auto. trans., painted 409 SS New Leader L4000G4 14 ft spreader, Viper Pro, AgCommand controller, Slingshot ready, A/C, premium leather air ride seat, 1000/50R25NHS front tire, 1000/50R25 rear tires (70% remains). Engine rebuilt 6/18 by AGCO under warranty, has 500 hours on it.

SN: AGCA7300LFNSN1005 (MO) **No. U1379**



**\$8,000**

**2015 GVM 5' Fusion Insert**, 5 ft fusion insert, fits in GVM Double Duty 8, 9.5 and 11 ton spreader boxes

SN: 130779 (PA) **No. U1431**



**\$155,000**

**2019 GVM 7300 Hydra Spread**, 5000 miles, Cummins B6.7 250 HP engine, Allison trans., 4WD, 409 SS 8 ton GVM Double Duty spreader, Shur-Lok Roll Tarp, Viper 4+ with guidance software, RGL600 light bar, A/C, AM/FM radio with Weather Band, Front Axle, (2) 385/65R22.5 Goodyear tires, (2) rear 600/60-30.5 floater tires.

(Biglerville, PA) **No. U1444**



**\$50,000**

**2010 GVM 9275 Prowler**, 5099 hours, Cummins QSB6.7L 275 hp diesel engine, auto. Funk 10-speed powershift trans., 9.5 ton GVM Double Duty spreader body, Raven Viper 4, A/C, AM/FM radio, air ride seat, manual roll tarp, includes 650/75R32 front (10% remains) and 800/65R32 rear (60% remains) Goodyear floater tires. **Frame sandblasted and painted, Winter 2019.**

SN: RC-101149T1194 (Piedmont, MO) **BROKERED**



**\$150,000**

**2013 GVM E325 Prowler**, 1738 hours, Cummins QSL 8.9 hp turbo diesel engine, ZF 6-speed trans., 409 SS painted GVM Double Duty 11 ton spreader with a 5 ft fusion insert, Viper Pro, SmarTrax 3D autosteer, A/C, AM/FM radio, air ride seat, 380/90R46 Row crop tires (90% remains).

SN: CS-13325XI1012 (OH) **No. U1409**



**\$175,000**

**2015 GVM E325 Prowler**, 2700 hours, Cummins QSL9 325 hp diesel engine, 1010 ft-lb torque, auto. ZF WG 210 6-speed powershift trans., 120 in. axles, variable coil spring suspension, 409 SS painted GVM Double Duty 11 ton spreader, Viper Pro, parallel swathing, A/C, AM/FM radio, air ride seat, 380/755R42 tires (40% remains), and Firestone flotation tires, 650 front and 800 rear. Rebuilt engine by Cummins in August 2018. **Frame sandblasted and painted in February 2019.**

SN: CS-15325XI1034 (PA) **No. U1358**



**\$225,000**

**2017 GVM E330AA Prowler**, 1287 hours, Cummins QSL9 330 hp turbo diesel engine, Funk DF250 powershift 11-speed trans., Dromos adjustable axles rated for 30,000 lb 108-120 in., 304 SS GVM Double Duty 11 ton spreader with 5 ft fusion insert, Raven Viper 4+, RGL 600 Light Bar, SmarTrax Auto Steer, 480/95R50 row crop tires, tires shown not included. Remainder of 5-year engine/trans./axle warranty included, began April 2017.

**Frame sandblasted, painted, and reconditioned by GVM June 2020.**

SN: CS-17330AA1016 (OH) **No. U1420**



**\$265,000**

**2017.5 GVM E330AA Prowler**, 733 hours, Cummins QSL9 330 hp turbo diesel engine, Funk DF250 powershift 11-speed trans., Dromos adjustable axles rated for 30,000 lb, 304 SS GVM Double Duty 11 ton spreader, Viper 4, SmarTrax, 600S Receiver, A/C, air ride seat, front fenders, 380/90R46 tires (90% remains). Includes remainder of 5-year engine/trans./axle warranty, began on 11/30/17.

SN: CS-17330AA1020 (MO) **No. U1365**



**\$190,000**

**2017.5 GVM E330AA Prowler**, 2268 hours, Cummins QSL8.9 330 hp turbo diesel engine, Funk DF250 powershift 11-speed trans., Dromos adjustable axles rated for 30,000 lb. 108-120 in., 304 SS New Leader L4000G4 11 ton spreader, Raven Viper 4+, SmarTrax, RGL 600 Light Bar, air ride seat, A/C, AM/FM radio, 380/90R46 Michelin tires (60% remains), includes set of floater tires. Includes remainder of 5-year engine/trans./axle warranty, began on 12/21/17.

SN: CS-17330AA1024 (PA) **No. U1442**



**\$290,000**

**2019 GVM T380 Prowler**, 259 hours, Cummins QSL9 380 hp turbo diesel engine, Funk DF250 11-speed manual trans., 409 painted SS GVM Double Duty 11 ton Fusion Ready spreader with 7 ft insert, Dromos adjustable axles, 173 in. wheelbase, Raven Viper 4+, RS-1 ISO receiver, parallel swathing, bin level sensor, air ride seat, A/C, AM/FM radio, roll tarp, 380/105R50 Goodyear LSW tires front (70% remains) rear (60% remains). Warranty options available.

SN: CS-19380HAA1011 (MO)



**\$8,500**

**1988 International 2554 Spreader**, DT466 210 hp diesel engine, Spicer 5-speed, 2-speed rear manual trans., air ride seat, 11 ft New Leader L2020GT spreader, New Leader Mark 4 controller, Firestone front tires (50% remains), and Michelin rear tires (50% remains).

SN: 1HTZLDBR9KH66783 (VT) **BROKERED**



**\$28,000**

**1996 International Spreader**, DT466 turbo diesel engine, Roadranger manual 10-speed trans., 304 SS New Leader L2020GT-12 spreader, brand new InCommand 800 with 6500 GPS receiver, front 48/25.00 tires (40% remains), rear 66/43.00/25 right (50% remains) left (30% remains).

SN: 1HTGBAAN6SH204074 (OH) **No. U1427**

SPREADERS



\$95,000

**2015 Miller Condor GC75**, 833 hours, New Leader L3030G4 spreader with 4 in. sideboards, Viper Pro, SmarTrax, RGL 600 Light Bar, front wheel assist, row crop tires (40% remains). **Farmer owned**  
(PA) **No. U1302**



\$65,000

**2011 RBR Vector 300**, 4300 hours, Cummins 8.3L diesel engine, Allison auto. 4-speed trans., AxleTech axles rated @ 29,000 lb, painted 409 SS 11-ton New Leader L4000G4 spreader body, Raven Viper Pro, Auto Steer, John Deere cab, 380/90R46 front BKT (60% remains) and 380/90R46 rear Michelin tires (35% remains).  
(MO) **No. U1435**



\$165,000

**2017 RBR Vector 300**, 2958 hours, Cummins QSB 8.3 300 hp diesel engine, Allison 6-speed auto. trans., New Leader L4000G4 spreader body, Viper Pro, A/C, air ride seat, 380/90R46 tires (50% remains). Also includes (4) Firestone 650/65R38 floater tires.  
SN: M1700598 (PA) **No. U1422**

TENDERS



\$15,000

**2001 International 4900**, 481,187 hours, International DT-466 diesel engine, Eaton manual trans., MP hydraulic transfer pump, Parker PTO, 1000, 500, 65 gal. poly tanks, (2)100 gal. SS pods.  
SN: 1HTSDAAN51H402034 (Winchester, VA) **BROKERED**



\$7,500

**2003 Kenworth T300**, 29,865 hours, Cat 3126 330 hp diesel engine, Eaton 6-speed manual trans., 10-ton Willmar spreader body.  
(Winchester, VA) **BROKERED**



\$10,000

**2010 Dalton Ag DLQHD35**, 15 row side dress rig with 1200 gal. poly tank, 37.5 ft booms, 30 in. nozzle spacing, 3-sections, Y-drops, John Deere rate controller for 2630 screen. Raven rate controller and display still available. Coulters and shanks available for injecting nitrogen.

SN: 11607 (Trappe, MD)

**BROKERED**



\$13,500

**2005 Doyle Vertical 8 Ton Blender**, 304 SS tank, inlet hopper blender flat top, legs, and bottom plate, TEFC motor, dual voltage 440/240. Rebuilt gearbox, auger, and scale in 2015.

(Winchester, VA) **BROKERED**



\$5,000

**2010 4660 SpraCoupe Perkins Diesel Engine 1104D**, 874 hours, 4 cylinder, 4.4L (269 in.³), 125 hp (93 kW) at 2200 rpm. Engine includes: alternator, starter injection pump, turbo charger, and primary fuel filter and housing.

(PA)

(PA)



\$5,000

**2006 GVM Spray Rig Only**, 400 gal. SS tank, 50 ft booms, poly boom lines with rubber hose, 3-section shutoff valve, single body nozzles, SS eductor.

(NY) **BROKERED**



\$3,000

**AxleTech Rear Axle**, complete 99 in. rear axle.

SN: 00054

(Landisburg, PA) **BROKERED**



\$5,000

**AxleTech Front Axle**, complete 99 in. front axle.

SN:00054

(Landisburg, PA)

**BROKERED**



\$4,125

**(2) Goodyear Row Crop Tires**, 380/90R46, white, with 1 in. offset. **Brand new!**

(PA)



\$3,174.60

**Goodyear Tires**, (2) 650/75R32 (5% remains), (2) 800/65R38 (15% remains), white rims.

(PA)

**No. U1421**



\$6,000

**Alliance Turf tires**,

(4) Alliance turf tires. Will fit any Prowler. 850/50-30.5.

(Sikeston, MO)

**BROKERED**



\$1,300

**Goodyear Ultra Sprayer Tire**,

(1) new Goodyear Ultra Sprayer tire with 1 in. offset wheel. 380/90R46.

(Sikeston, MO) **BROKERED**



\$8,000

**(4) Firestone Row Crop Tires and Rims**, 380/90R46, white, with 1 in. offset.

(PA)



Call for Price

**(2) Rims 12x46 in.**, heavy bead gray, W46-03500P15. Brand new!

(PA)



October 12, 2020

# STOCK EQUIPMENT



Biglerville, PA  
800-345-3546

Bellevue, OH/Peru, IN  
800-848-8460

Sikeston, MO  
573-475-9496



## SPRAYERS



\$165,000

**2012 GVM E325 Prowler**, 35 demo hours, Cummins QSL9 325 hp diesel engine, 1010 ft-lb torque, ZF WG210 powershift 6-speed trans., 114 in. axles, variable coil spring suspension, barely used, 1800 gal. SS tank, 70/90 ft booms, 20 in. on-center nozzle spacing, 10-section shutoff valve, triple body nozzles, Viper Pro, AutoBoom, AccuBoom, Phoenix 200 receiver, SmarTrax 3D, Raven UltraGlide, chemical eductor, foam marker, camera on spray rig, 2 in. front fill.

SN: CS-12325XI1011 (PA)



\$295,000

**2015 GVM E325 Prowler**, 4 demo hours, Cummins QSL9, 325 hp diesel engine, ZF WG210 powershift 6-speed trans., 114 in. axles, variable coil spring suspension, 1800 gal. SS tank, combo ready, A/C, AM/FM radio, air ride seat, chemical eductor, fenders, 380/90R46 Trelleborg tires.

SN: CS-15325XI1039 (PA)

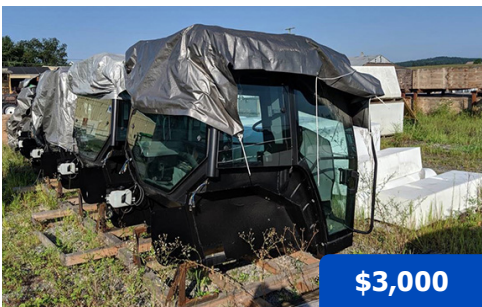


\$295,000

**2014 GVM E370 Prowler**, 393 demo hours, Cummins QSL9 370 hp diesel engine, 1800 gal. SS tank, 4 chemical induction tanks, 60/90 ft booms, dual, low, and high volume boom lines for suspension fertilizer, high volume Ace pump, Viper Pro, Phoenix 200 receiver, SmarTrax 3D, UltraGlide, 380/90R46 tires. Includes 5-year warranty, began May 15, 2017.

SN: CS-14114XI1031 (PA)

## MISCELLANEOUS



\$3,000

**Crenlo Genesis Cab**, Brand new cabs made for 1996-2014 GVM Prowlers. Will fit all Rowcats, 1149/9909T and 9275 Prowlers. Can also fit New Holland Genesis series tractors with modifications.

(PA)



\$1,500

**New Holland Chopper Cab**, Brand new cab purchased for Multi-Purpose Utility Vehicle cab. Never used, built to fit New Holland Chopper.

(PA)

MISC.

PART NUMBER	DESCRIPTION	QUANTITY	PRICE
W38-13300	Rim 38 x 12 11/16 in. offset (front)	2	<b>\$566.00</b>
W-619060R	Rim W14 x 16.1	2	<b>\$73.00</b>
42-01160 (PA)	Assy., Dash Panel Electronic 2004	3	<b>\$1,327.00</b>